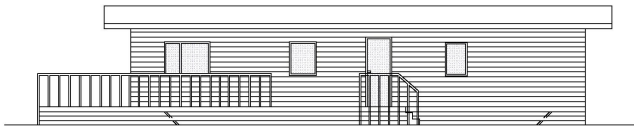


Ground Floor

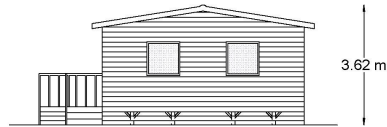


Roof Plan

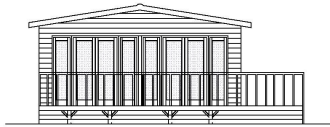
THIS COPY HAD BEEN MADE BY OR WITH THE AUTHORITY OF RYEDALE DISTRICT COUNCIL PURSUANT TO SECTION 47 OF THE COPYRIGHT DESIGNS AND PATENTS ACT 1988. UNLESS THAT ACT PROVIDES A RELEVANT EXCEPTION TO COPYRIGHT, THE COPY MUST NOT BE COPIED WITHOUT THE PRIOR PERMISSION OF THE COPYRIGHT OWNER.



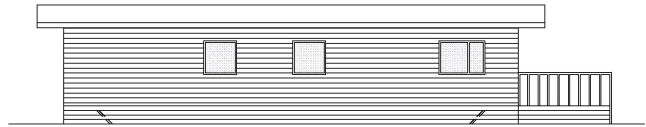
Side elevation



Rear elevation



Front elevation

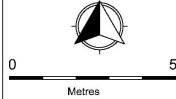


Side elevation

Notes:

Materials:

Walls: Timber cladding stained
 Roof: Felt shingles (grey)
 Windows / Doors: Double glazed UPVC



Client: GraceMax Ltd

Title: Change of use of former aerodrome to allow the siting of up to 65 timber clad static holiday units including manager's accommodation, reception / office Land west of Hungerhill Lane, Wombledon Airfield, Wombledon

Date: 22.5.18

Scale: 1:100 @ A3

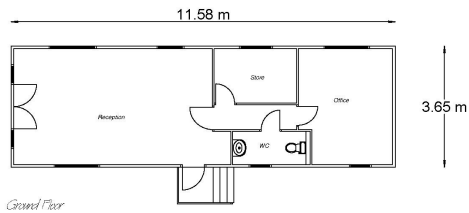
Drawing ref. WA-HL- 1.2

Webster Associates
 Chartered Town Planners

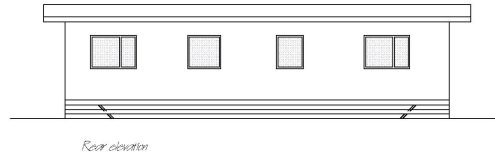
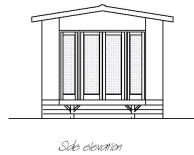
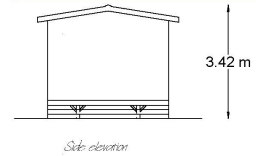
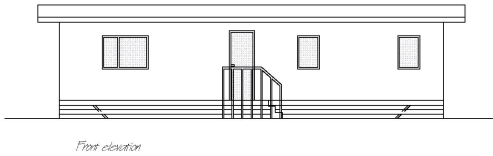
3 Spaldwick Road
 Stow Longa
 Huntingdon
 Cambs
 PE28 0TL

Tel: 01480 860862

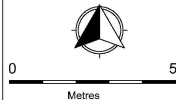
Reception / Office



THIS COPY HAD BEEN MADE BY OR WITH THE AUTHORITY OF RYEDALE DISTRICT COUNCIL PURSUANT TO SECTION 47 OF THE COPYRIGHT DESIGNS AND PATENTS ACT 1988. UNLESS THAT ACT PROVIDES A RELEVANT EXCEPTION TO COPYRIGHT, THE COPY MUST NOT BE COPIED WITHOUT THE PRIOR PERMISSION OF THE COPYRIGHT OWNER.



Notes:
Materials:
Walls: Timber cladding stained
Roof: Felt shingles (grey)
Windows / Doors: Double glazed UPVC



Client: GraceMax Ltd

Title: Change of use of former aerodrome to allow the siting of up to 65 timber clad static holiday units including manager's accommodation, reception / office Land west of Hungerhill Lane, Wombledon Airfield, Wombledon

Date: 22.5.18 Scale: 1:100 @ A3 Drawing ref. WA-HL- 1.3

Webster Associates
Chartered Town Planners
3 Spaldwick Road
Stow Longa
Huntingdon
Cambs
PE28 0TL Tel: 01480 860862